

Members' Newsletter Exhibitions

DECEMBER 2009 / JANUARY / FEBRUARY 2010

Steven White: The Combine Project

November 27, 2009 to January 17, 2010
Opening Reception: Friday, November 27 at 7 pm

Steven White reconstructs obsolete technology, in this case a combine harvester, to produce wall and kinetic sculpture. Exploring issues of technological evolution and devolution, the show makes a poignant comment on the built-in obsolescence in much of present day technology. Taking five years to complete, this body of work reflects a playful sense of wonder at the possibilities present with these lost fragments of technology. The interactive nature of the sculptures engages the viewer in a playful dance; cranks get rotated, sounds are produced and the individual's role in these complex webs is highlighted. In an age of intense digital development, the low-fi makeup of these sculptures entices the viewer, who then becomes a collaborator in the finished work.

BELOW: STEVEN WHITE, BRIAN'S ARC, N.D. STEEL, CONCRETE, CABLES, COMBINE HARVESTER PARTS, 78 X 120 X 36 INCHES.



Convergence: 47th Annual Juried Exhibition

January 22 to February 28, 2010
Opening Reception and Awards Ceremony: Friday, January 22 at 7 pm

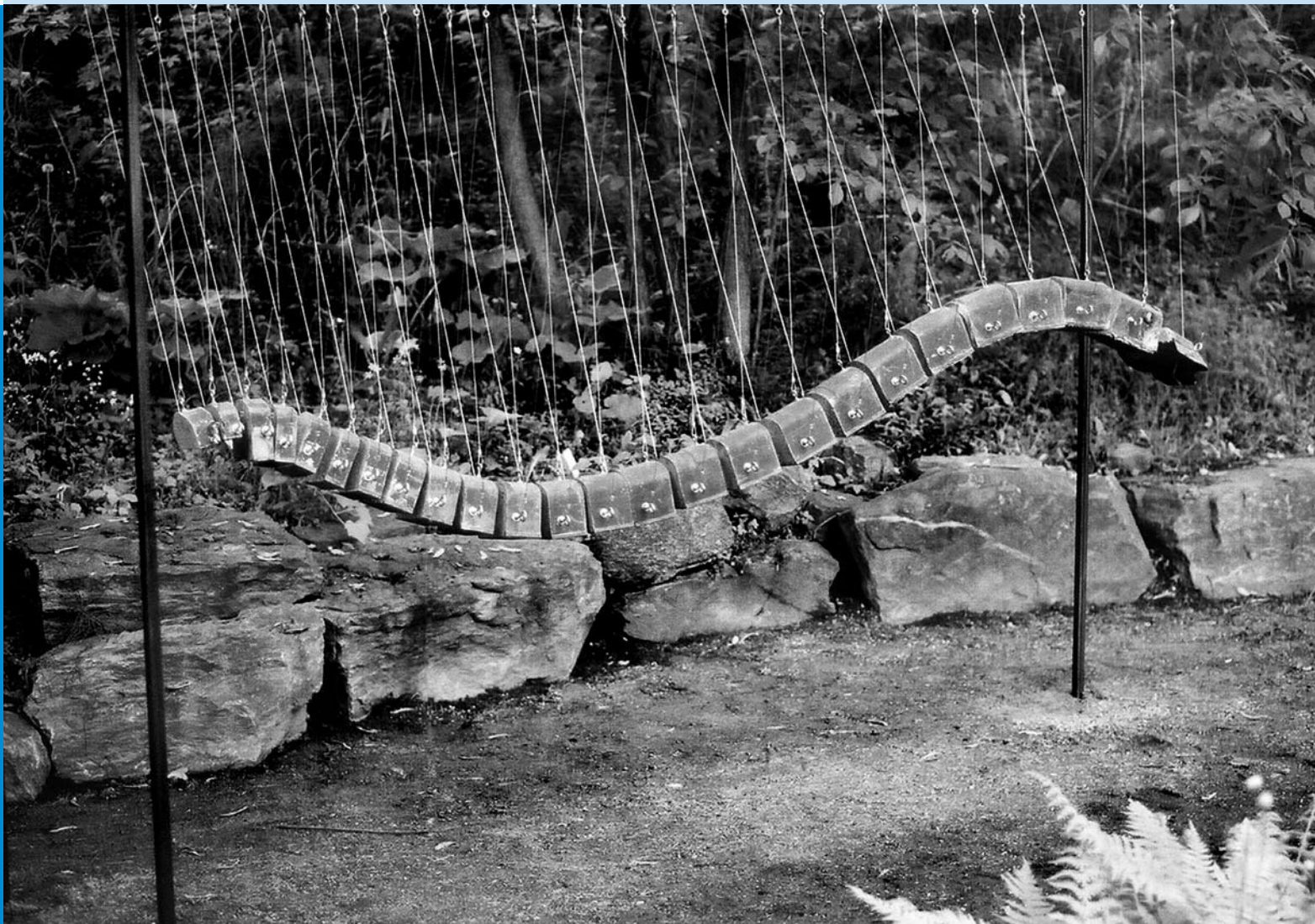
This exhibition aims to reward excellence and innovation in artistic production. "Taking the pulse" of art-making in the region, the work exemplifies what makers are thinking about — contemporary artists' concerns, working methods, and manners of exploration. It is an opportunity to survey current visual arts practice by a wide range of artists, and encompasses all fine art media including painting, drawing, printmaking, photography and sculpture, as well as the contemporary craft, media and time-based formats. This year the Gallery has assembled a strong jury to select the exhibition from works submitted from all over Ontario: Rhona Wenger, Director of the Grimsby Public Art Gallery; David Taylor, former Curator of Gallery Lambton; and Michael Jacob Ambedian, artist.



ALL EXHIBITIONS SPONSORED BY:

THE SUNTIMES
PROUD SEASON SPONSOR 2009

**THE
TOM
SON
AG**



Voyage of Discovery: Selected works from the Permanent Collection

January 22 to February 28, 2010
Opening Reception: Friday, January 22 at 7 pm

The Tom Thomson Art Gallery's permanent collection consists of over 2,000 works that have been purchased or donated to us over the last four decades. A number of these pieces have spent a great amount of time "living" in our storage area. It is a challenge for almost every gallery or museum to provide ample opportunities for exhibiting these stored treasures, yet it is also vitally important, as its collection is the heart of an institution.

Marcel Proust wrote: *The real voyage of discovery consists not in seeking new landscapes but in having new eyes.* This exhibition will provide an opportunity to present artworks that have not been on display for several years and to showcase the richness and diversity of works within our collection. Viewers will get a chance to discover anew the wealth and breadth of the works in our holdings, to enjoy and engage with older works, and to discover new favourites.



Continuing:

Community Curators Select continues to February 21, 2010

Patrons and art lovers were given a chance to go into the vault and select their favorite piece. Come check out this eclectic exhibition in the Thomson Room. If you would like to participate in future Community Curators or other fundraising activities, contact the Gallery.

RIGHT: LAWREN HARRIS, LAST GLEAM, NORTH SHORE, N.D. OIL ON BOARD.

northpoint
Investment Solutions Inc.



Programs and Events

3rd Sunday

The Gallery offers these free events every third Sunday of the month. All are welcome.

December 20, January 17, February 21

Guided Tour 2 pm

Enjoy a lively and informative tour of our current exhibitions.

Make Art 1 to 3 pm

Visit the Gallery Studio for an afternoon of family fun with arts & crafts activities.

3RD SUNDAY IS SPONSORED BY:



where real people build lives™

Tours

Guided tours for groups of 10 or more, and school tours can be booked at any time—a three week advance booking is requested. Contact David Huff, Manager of Public Programs, at the Gallery, for more information.

SPONSORED IN PART BY:



Five Museums and an Art Gallery

This successful Gallery program provides free membership privileges to all **Grade Five students** in Grey and Bruce Counties to the following heritage and cultural facilities: Billy Bishop Home & Museum, Bruce County Museum & Cultural Centre, Grey Roots Museum & Archives, Owen Sound Marine & Rail Museum, Meaford Museum and the Tom Thomson Art Gallery. Membership benefits include student admission and one accompanying adult admission for one full year. For full program information contact the Gallery.

Life Drawing

Mondays, January 11 to March 8

1 to 3:30 pm (NO class Family Day Monday, February 15)

Cost: \$65/\$60 members/\$10 drop-in fee

Non-instructional life drawing sessions are being offered for 8 weeks this winter. Practice capturing the likeness of different models through this open studio course. Participants provide their own supplies. Drop-ins are welcome.

After School Studio

The Gallery is excited to continue our newest art program for children. These creative after-school workshops provide students with enriched art experiences and are led by professional instructors. "Studios" will be held in a number of area schools starting in mid-January, running for six weeks; cost is \$60. For class details and to register, contact the Gallery.

Art à la carte

For the young at art, something different every day at the Gallery during the March Break, March 15 to 19. Watch our website for details or contact the Gallery.

Gallery Night at the Movies

One of the hottest tickets in town, this film series is presented in conjunction with **tiff.365** and brings the best in Canadian, foreign and independent film to the region. For pass and individual ticket availability, contact the Gallery. Visit our website for full movie details.



THE BOYS ARE BACK

A wise-cracking sports reporter adapts a "no rules" approach to raising his two boys in the hopes of reuniting his family following an unspeakable loss. Humorous and poignant, this film stars Clive Owen and is inspired by a true story. PG 104 minutes.

Monday, January 11 at 1:30, 4:15 and **SOLD OUT pm**
at Galaxy Cinemas, Owen Sound

Wednesday, January 13 at 6:45 pm
at Port Elgin Cinemas, Port Elgin



AN EDUCATION

Winner of the Audience Choice and Cinematography Awards at Sundance 2009, this coming-of-age film depicts a young woman falling for a much-older man while prepping for Oxford in a dazzling recreation of pre-Mod London, England in the early 60s. PG 95 minutes.

Monday, February 22 at 1:30, 4:15 and **SOLD OUT pm**
at Galaxy Cinemas, Owen Sound

Wednesday, February 24 at 6:45 pm
at Port Elgin Cinemas, Port Elgin



COOKING WITH STELLA

This spicy and spirited social satire stars Lisa Ray and Don McKellar as Canadian nationals who, when posted to New Delhi, inherit a household of servants, including Stella (Seema Biswas) who cooks up as many schemes as she does wonderful South Indian dishes. NR 104 minutes.

See it at the Festival!

Owen Sound's Reel Festival

Friday, January 29 to Sunday, January 31, 2010

Galaxy Cinemas, Owen Sound

5 Great Movies! 1 Amazing Weekend!

Ticket packages for our 8th Reel Festival are now on sale!

The Party Package includes:

5 great movies, Friday evening reception, Sunday Brunch. \$105 general, \$100 for members.

The Movie Package includes:

the same 5 great movies at different screening times. \$80 general, \$75 for members.

To purchase either package, contact the Gallery. If available, single tickets go on sale January 19. Watch our website for film confirmations.

100 Squares: The Biggest Little Show in Town

continues to December 31

Area artists were invited to submit miniature works of art, in any medium, measuring no more than 10 x 10 x 10 cm for this one-of-a-kind, non-juried show. Works are on sale through the Gallery Shop, with a portion of the proceeds supporting programming at the Gallery.

Cosmic Images

November 27 to January 2, 2010



In conjunction with the *Festival of Northern Lights*, a touring astrophotography display featuring images taken by members of the Bruce County Astronomical Society is on view in the Gallery Studio. Celebrate the International Year of Astronomy with the wonders of our

beautiful dark skies and the *aurora borealis*.

DOUG CUNNINGHAM, AURORA QUEETICAN 1, 2008.

Christmas Around the Sound

November 28

In conjunction with the *Festival of Northern Lights*, the Gallery will be open until 7 pm the evening of Saturday, November 28 to celebrate *Christmas Around the Sound*. Holiday revelers can participate in a number of entertaining activities; drop by the Gallery and join in the fun.

Let's Make Some Noise

December 28, 1 to 3 pm

The Olympic Torch is making its way across Canada, and arrives in Owen Sound on Monday, December 28. In conjunction with Steven White's exhibition *The Combine Project*, we are offering a *Let's Make Some Noise* workshop in the Gallery Studio from 1 to 3 pm. Participants will construct their own noise-making instrument from found objects to sound along the Torch parade route later that evening.

Special Screening: A Growing Season

January 10 at 2 pm

In conjunction with Steven White's exhibition, *The Combine Project*, the Gallery will hold a special screening of the documentary *A Growing Season*, on Sunday, January 10 at 2 pm. This new Canadian documentary created by W.E. Productions explores how the food we eat is produced, the current state of the family farm, as well as themes related to the 100-Mile Diet and perils of "globalized" food production. The film follows vegetable farmer John Gorzo Jr. and his family over eight months in the Holland Marsh, located less than an hour north of Toronto. 50 minutes. Admission by donation; all are welcome.

What's Happening



VIRGINIA EICHHORN
DIRECTOR/CURATOR

Message from the Director

It gives me great pleasure to be writing my first *Message from the Director*. The Tom Thomson Art Gallery has long been a place of importance to me and my family, and it is wonderful to "officially" be a part of it now.

The fall has seemed to have flown past and now we're preparing for winter. My first few weeks here were something of a blur of activities. The Gallery saw a number of events unfold including exhibitions by Andrew Harwood and Michael Campbell, as well as the *Community Curator's* event. Shortly, we'll be opening Steven White's *The Combine Project* and preparing for our annual *Convergence* juried exhibition and our *100 Squares* fundraiser. Our fall school programs have begun, the *Gallery Night at the Movies* film series is well underway and we're gearing up for the *Reel Festival* at the end of

January. Plans are also underway to kick-off a new docent program in the New Year.

A membership at the Tom Thomson Art Gallery gives you advance notice on these and many other of our activities. More importantly, it helps to ensure that the nationally acclaimed programming that we provide continues – and gives you an opportunity to have an integral role in maintaining the legacy of one of Canada's greatest cultural icons. If you already have a membership, consider giving one (or two!) as a gift this holiday season. Membership payment can now be arranged for on a monthly basis, with the convenient option of automatic renewal. Contact the Gallery or visit our website for further details.

With best wishes,

News

Inaugural Owen Sound Cultural Awards

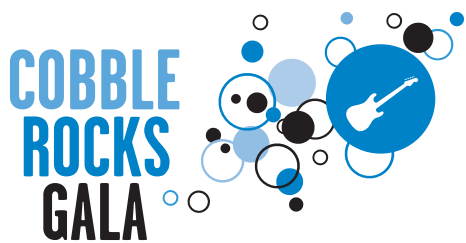
Chaired by our own Michael Milhausen and with our new Director Virginia Eichhorn on the selection committee, the first-ever Owen Sound Cultural Awards were awarded in a gala presentation evening this past October. Long time Owen Sound residents, Andrew and Sandra Goss, from Goss Design Studio won the Creation Award in the visual and media arts category. Works by Goss Design Studio can be found in our Gallery Gift Shop.

The Owen Sound Cultural Awards celebrate excellence in the arts, culture and heritage in the greater Owen Sound area. These awards serve to underline the importance of culture to Owen Sound residents, and to recognize groups and individuals for their outstanding achievement and contributions to the area's cultural vitality.

For more information about the awards and to see all of categories' winners — including Cultural Pillar winner Eva Leflar and Lifetime Achievement winner Ed Bartlett — visit www.owensound.ca/culturalawards

The Library presents...the First Owen Sound Youth Film Festival

Are you a filmmaker between the ages of 13 and 18? Then the Owen Sound & North Grey Union Public Library would like to invite you to submit your work for the first Owen Sound Youth Film Festival. Films should be no more than 10 minutes in length and may be either live action or animated. To celebrate the spirit of cinema, the Gallery and the Reel Festival will be partnering with the Library on this project. For more details contact Nadia Danyluk, Children & Youth Services Librarian, at 519-376-6623 x 4 or ndanyluk@owensound.library.on.ca



Cobble Rocks—May 15, 2010

Mark Saturday, May 15 on your calendar and plan on attending the *Cobble Rocks Gala* at Cobble Beach. Members of the Gala Committee are working hard to make this extraordinary fundraising party an evening not to be missed. Watch for details in the next newsletter and on our website.



Northern Sightings

LEFT COLLECTIONS MANAGER RACHEL MONCKTON ASSISTS A YOUNG COMMUNITY CURATOR IN SELECTING A PIECE FROM THE PERMANENT COLLECTION.



RIGHT ARTIST MICHAEL CAMPBELL SPEAKS AT THE OPENING OF HIS EXHIBITION, *FIELD RECORDINGS OF ICEBERGS MELTING*.



ABOVE LEFT ASSISTANT CURATOR MICHELLE LE CHIEN TAKES A COMMUNITY CURATOR'S STATEMENT ABOUT HER CHOSEN WORK.

ABOVE RIGHT MADAME ZSA ZSA, THE UNDERWATER ORACLE, (AKA ARTIST ANDREW HARWOOD) AND DIRECTOR VIRGINIA EICHHORN LOOK INTO THE FUTURE DURING THE OPENING OF *SAILOR*.



LEFT DIRECTOR VIRGINIA EICHHORN AND MANAGER OF PUBLIC PROGRAMS DAVID HUFF WITH DR. JONATHAN BORDO WHO SPOKE ON ART AND WILDERNESS AS PART OF THE *COMMUNITY CURATORS SELECT* OPENING IN OCTOBER.

BELOW LEFT CHAIR MICHAEL MILHAUSEN WITH COMMUNITY CURATORS AT THE SHOW'S OPENING.

BELOW RIGHT STEVE COFFEY FROM SPONSOR NORTH POINT INVESTMENTS SOLUTIONS INC. AT THE OPENING OF *COMMUNITY CURATORS SELECT*.



Calendar of Events

The Gallery Shop



Creative gifts that will last a lifetime...

TOM THOMSON
AG

Tom Thomson Art Gallery
840 First Avenue West
Owen Sound ON
Canada n4k 4k4
519-376-1932
ttag@owensound.ca

Gallery Hours
Tuesday to Friday: 11 to 5
Saturday and Sunday: 12 to 5
Victoria Day to Thanksgiving
Monday to Saturday: 10 to 5
Sunday: 12 to 5

Admission
Adults \$5
Seniors & Students \$3
Members always FREE
Children under 12 FREE
Wednesdays pay-what-you-can

Visit www.tomthomson.org for more information.

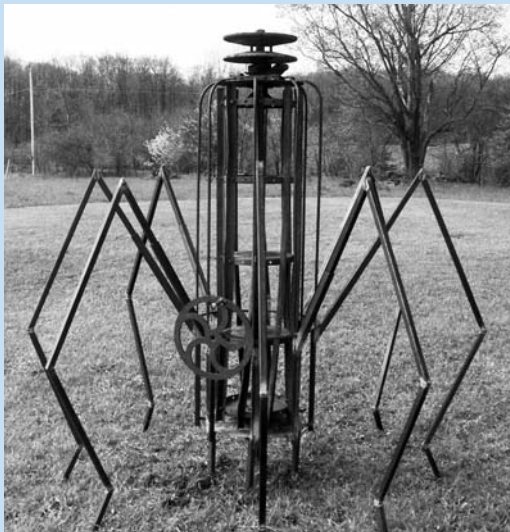
December

Sunday, December 20
1 to 3 pm Make Art
2 pm Public Tour

Thursday, December 24 to Saturday,
December 26
Gallery closed

Sunday, December 27 to Thursday,
December 31
Holiday hours 12 to 4 pm

Monday, December 28
1 to 3 pm Let's Make Some Noise
Workshop



STEVEN WHITE, SPIDER BARK. EXHIBITION RUNS UNTIL JANUARY 17, 2010.

Don't miss the 8th Annual

Owen Sound's Reel Festival

January 29 – 31, 2010



January

Friday, January 1
Gallery closed

Saturday, January 2
Holiday hours 12 to 4 pm
Last day to view *Cosmic Images*

Sunday, January 3
Holiday hours 12 to 4 pm

Sunday, January 10
2 pm Special Screening: *A Growing Season*



STILL FROM THE BOYS ARE BACK.

Monday, January 11
1 to 3:30 pm Life Drawing Session
1:30, 4:15 and 7 pm Gallery Night at the
Movies: *The Boys are Back*, Galaxy Cinemas

Wednesday, January 13
6:45 pm Gallery Night at the Movies:
The Boys are Back, Port Elgin Cinemas

Sunday, January 17
1 to 3 pm Make Art
2 pm Public Tour
Last day to view Steven White:
The Combine Project

Monday, January 18
1 to 3:30 pm Life Drawing Session

Friday, January 22
7 pm Opening: *Convergence and
Voyage of Discovery*

Monday, January 25
1 to 3:30 pm Life Drawing Session

Friday, January 29
Owen Sound's Reel Festival
Galaxy Cinemas

Saturday, January 30
Owen Sound's Reel Festival
Galaxy Cinemas

Sunday, January 31
Owen Sound's Reel Festival
Galaxy Cinemas

February

Monday, February 1
1 to 3:30 pm Life Drawing Session

Monday, February 8
1 to 3:30 pm Life Drawing Session

Sunday, February 21
1 to 3 pm Make Art
2 pm Public Tour
Last day to view
Community Curators Select

Monday, February 22
1 to 3:30 pm Life Drawing Session
1:30, 4:15 and 7 pm Gallery Night at the
Movies: *An Education*, Galaxy Cinemas



STILL FROM AN EDUCATION.

Wednesday, February 24
6:45 pm Gallery Night at the Movies:
An Education, Port Elgin Cinemas

Sunday, February 28
Last day to view *Convergence and Voyage
of Discovery*



Please join us for the opening reception of

Voyage of Discovery

Friday, January 22, 2010 at 7 pm

NICHOLAS HORNYANSKY, WOODEN WORLDS, 1940.
OIL ON CANVAS, 101.6 X 127.5 CM

Supporters

Bequests

Celebrate a Life by Enriching the Lives of Others

When you make a bequest in support of the Tom Thomson Art Gallery Endowment Fund, you will help to enhance life in your community for generations to come; your investment will continue to make a difference forever. Bequests can be directed to a variety of Gallery initiatives, including art conservation, education or our building fund. You may choose to make a bequest honouring a loved one, or in your own name.

For more information, contact Christy Telford, Administrative Assistant.

Thank you to our members' circles

DONOR'S CIRCLE

Kate & Gordon Baty, Johan Beck, Lorraine & Cliff Bilyea, Jenifer & George Burbidge, Margaret & Scott Cameron, Joan D. Clayton, William & Helen Dane, Jorgen Fleischer & Ulla Sparrow Fleischer, Keith & Joanne Hall, Ralph Harkness, Jose & Emile Kruzick, Lori Labatt, Ola & Hector Lazzarotto, Pat McCoy, D.L. McGregor, Janice McKean & Art Weibe, Jennifer & Michael Milhausen, Pat & Donna Mitchell, Sonya Mount & Bill Courage, Louise & Pat Patterson, David Sugarman & Jennifer Clark, Michael & Elizabeth Warren, Ken & Trudy Watson

CURATOR'S CIRCLE

Edna & Tom Burri
Paul & Virginia Eichhorn

Thank you to our Corporate Members

Advanced Pain Relief Clinic;
Black Financial / Investment Planning Council; Bruce Telecom; Foto Art; The Framery; Georgian Bay Fire & Safety; The Highland Manor; Kirby, Robinson, Treslan & Conlan; MacLeod Farley & Associates; Montgomery Philip King Architect

Thank you to our generous donors and sponsors...

TAMARACK CLUB \$100 to \$1,000

Judy Armstrong & Peter Leonard
Sue & John Barber
Helen & Brian Barrie
Bayshore Broadcasting
Johan Beck
Jim Belden & Gabrielle Phillips
Hildo Bolley
George & Jenifer Burbidge
Edna & Tom Burri
Diane Carleton
Stanley Carleton
Margaret & Scott Cameron
Ruth & Murray Cathcart
Joan D. Clayton
M. Jane Cooper
William & Helen Dane
Eleanor Dewolf & David Britton
Linda & Gord Edwards

Donna & Dave Elliott
Sandra Esplin
Franklin Templeton
Joan & Peter Follows
Jorgen Fleischer & Ulla Sparrow Fleischer
Judy Gay
Jeff & Kelly Graham
Robert Groh
Green Solutions Canada Foundation
Grey Bruce Escape
East Side Mario's
Gloria Habart
Deb Haswell
Torben & Joan Hawksbridge
Ralph Harkness
Christy & Ralph Hempel
Wayne & Susan Hilts
Margaret & John Howard
Don Johnston, NorthPoint Investment Solutions
Diane & Peter Jones
Nora Jones
Pat Keeling
Arlene Kennedy
Kirby, Robinson, Treslan & Conlan
Anne & Graeme Kirkland
Michelle Lafleur & J.P. Bisnaire
Katherine & John K. Lawson
Ola & Hector Lazzarotto
Diane Lewis & B. Abernathy
Noreen & Peter Little
Beth & Steve Lowe
Carolyn MacDonald
D.L. MacGregor
Linda Manness
Elaine & Mac Mercer
Jennifer & Michael Milhausen
Anne Louise McArthur
Pat McCoy
Stuart McGillis
Donna McKay Mills
Pat & Donna Mitchell
Lynda Montgomery & Dennis Yurkiw
Julia & Joe Morneau
Ross Morrison
Sonya Mount & Bill Courage
Mountain Life Magazine
Elizabeth & Ted Mullens
Gail Norris
Donna & Ron O'Donoghue
Owen Sound Ledgerock
Louise & Henry Patterson
Peter & Rosemary Preuss
Nancy & Frank Petanowitch
Donna & Gordon Phillips
Peg Richardson
The Rocking Horse
Royal Canadian Legion

Jo Ann & Toomas Sauks
Ken & Janine Sobiski
Standard Life
David Sugarman & Jennifer Clark
Don & Heather Sutherland
Michelle & Jeff Sziklai
Joanne Veerman, HomeLife
Bayside Realty
John Tamming & Wendy
Bye-Tamming
Jeff & Kristie Taylor
David Taylor
Roma & Dave Taylor
Dorothy Telford
The Runner's Den
Judy & Ken Thomson
Mary & Scott Thomson
Erroll & Elaine Treslan
Flora & Ian Tripp
Shannon & Paul Weitendorf
Donna & Terry Welton
Sandra L. Hatt, Wiarton Insurance
Johanna & Niek Wit
George Yost & Katherine Lochnan

GEORGIAN CLUB

\$1,000 to \$4,999

Anonymous Foundation
David Black, CIBC Wood Gundy
Bridges Art Gallery
BMO Nesbitt Burns Inc.
Paul M. Boulter, TD Waterhouse
Coates & Best Inc*
G.M. Diemert Architect
Lois Flemming
Judy Gay
Susan Gibson
Grey Motors Automotive Sales & Service*
J. Scott Kocher, TD Waterhouse
Meridian Credit Union Limited
Owen Sound Honda
La Pastorale
Peter H. A. Little, Investment Advisor,
RBC Dominion Securities Inc.
Stuart Reid & David Sereda
SunTrail Outfitters
The Royal Academy Foundation
SEI Canada
Tiffani Layne
Ken & Trudy Watson
William Whitham
Laurens Wit Construction

* A special thank you to our sponsors who have supported the Gallery for over five years at this level.

And to those who made Anonymous Donations – Thank You!

ALGONQUIN CLUB

\$5,000 to \$9,999

The Walter & Duncan Gordon Foundation



THOMSON CLUB

\$10,000+

THE SUN TIMES

BEQUESTS

The estate of Betty Ann McKay

STAFF

Virginia Eichhorn, Director/Curator
Robert Alton, Gallery Attendant
David Huff, Manager of Public Programs
Michelle Le Chien, Assistant Curator/Registrar
Rachel Monckton, Collections Manager
Kris Rosar, Volunteer and Events Coordinator
Kim Skene, Program Assistant
Barry Stoneman, Custodian
Christy Telford, Administrative Assistant

The Members' Newsletter is published four times a year by the Tom Thomson Art Gallery.

Design: Lisa Kiss Design
Printing: Warren's Waterless Printing
Editor: Kim Skene
ISBN: 978-1-929021-53-6

Tom Thomson Art Gallery
840 First Avenue West
Owen Sound, ON Canada n4k 4k4
519-376-1932
tomthomson.org

The Gallery is generously supported by the Ontario Arts Council, the Canada Council for the Arts, the City of Owen Sound, members, volunteers, businesses and individuals.

Volunteers

To work for the common good
is the greatest creed.

— Albert Schweitzer

Volunteer Profile: Gallery Shop Receptionists

The volunteers who staff the Reception Desk are very important to the Gallery. These individuals are vital ambassadors for the Gallery and provide a critical link to the public. Their responsibilities are many: greeting visitors to the Gallery; providing information on exhibits, programs and events; answering and directing phone calls; handling sales transactions of shop product and movie tickets; processing memberships and art class registrations; and answering many questions.

About 25 or more individuals are required each and every month to operate this area. This team includes the following: **Mary Anne Bishop, Gail Blackburn, Margaret Cameron, Judy Chalmers, Sheila Davenport, Hope Fahner, Lynda Golini, Nancy Guest, Jody Hakala, Jennifer Hunter, Bob Kellough, Kaitlin Maya, Pam McCowan, Sheila MacMahon, Mary Monteith, Susan Morison, Ruth Nielson, Luke Overbeek, Eleanor Pauling, Jennifer Prior, Janine Sobiski, Joan Stephenson and Jane Wood.** Volunteers on this team come from various walks of life and offer a multitude of skills. A common characteristic amongst all these individuals is that they all enjoy interacting with the public and providing good customer service. Their contribution to the Gallery truly makes a difference.

Help Wanted

We have immediate need for Gallery Shop Receptionists, who enjoy meeting people and are willing to act as frontline staff three times per month. Complete training is provided for this important position.

Be there when amazing things happen —
VOLUNTEER! Contact Kris Rosar at the Gallery.

Comings and Goings

Welcome to our new volunteers: Robert Kellough (Gallery Shop Reception), Nancy Umbach (Gallery Shop Committee), Sam Dieter (Gallery Assistant, Make Art) and Pauline MacLeod Farley (Gallery Assistant, Resource Room). Best wishes and many thanks to Tom Khordorkovsky and Tina Deenik for their volunteer contribution as part of our Gallery Shop Reception team.

INFINITE THANKS TO...

... the members of Gallery Shop Committee — Jane Wood, Lorna McCluskie, Leslie and Bob Garnett, Donald McKay, Joan O'Reilly—and all the volunteers who helped to orchestrate another successful Fine Craft Sale in November. ... Renee Abram, Chris Hughes, Gloria Lewis, Jennifer Milhausen, Pat Mitchell, Cecilie Moses and Maggie Page for their tremendous help with hosting Community Curators Select.

Membership

Not sure if you need to renew your membership?

Call the Gallery
519-376-1932.

Mail your Membership Form to:

Tom Thomson Art Gallery
840 First Avenue West
Owen Sound, ON Canada n4k 4k4



JOIN Being a Gallery Member has its benefits!

FREE admission to all exhibitions and most public programs

- + Subscription to our members' newsletter, including notice of exhibition openings, programs and members' receptions
- + Discounts on Gallery Night at the Movies season passes, Gala events and lectures
- + Discounts on registration fees for art classes and workshops
- + 10% discount on purchases from The Gallery Shop (over \$10)
- + **FREE** admission to many public galleries in Ontario
- + Circle Members are eligible for additional benefits — visit our website for more information

Memberships are valid for one year from date of purchase

- New Renewal Gift

Membership Levels

- Individual \$35 Senior / Student / Artist \$25
 Family / Dual \$45 Corporate \$200

- Donors' Circle \$100 – \$249 \$
 Friends' Circle \$250 – \$499 \$
 Curator's Circle \$500 and over \$

* Charitable tax receipt will be issued for maximum allowable amount.

Partner Clubs

- Tamarack Club up to \$1000 \$
 Georgian Club \$1000 – \$4999 \$
 Algonquin Club \$5000 – \$9999 \$
 Thomson Club \$10000 and over \$

* Partners receive a charitable tax receipt for the full amount.

DONATE Make a tax deductible donation to:

- Art Matters Fund \$ _____
 – supports the Gallery and all its programs
 Education \$ _____
 Permanent Collection Acquisition Fund \$ _____
 Caron Cooper Education Bursary \$ _____
 – supports children to attend art classes
 Michele Carleton McGillis Fund \$ _____

Name _____

Address _____

City _____

Province _____ Postal Code _____

Email _____

Day Phone _____ Evening _____

Payment Total Amount: \$ _____

- I have enclosed my cheque payable to Tom Thomson Art Gallery.

Please charge my Visa Mastercard

Card No. _____ Exp: ____/____

- Please automatically renew my membership annually.

Steven White: The Combine Project

You are invited to the opening reception for *Steven White: The Combine Project* on Friday, November 27 at 7 pm.

Grey County artist Steven White reconstructs an obsolete combine harvester to produce wall and kinetic sculpture, exploring the issues of technological devolution.

STEVEN WHITE, BEE BREAKDOWN. COMBINE HARVESTER PARTS, LITHOGRAPH, 42 X 108 INCHES.

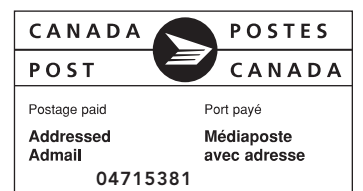


Steven White: The Combine Project

November 27, 2009 to January 17, 2010

THOMSON
AG

840 First Avenue West, Owen Sound ON Canada n4k 4k4 [Tom Thomson Art Gallery](#)



MEMBERS' NEWSLETTER

December 2009 / January / February 2010



This newsletter is printed on 70 lbs. Rolland Enviro 100 which contains 100% post-consumer fibre manufactured using biogas. Enviro 100 is certified under Environment Canada's Environmental Choice Program and the Chlorine Free Product Association.